

# S. OLD STATE RD. IMPROVEMENTS



## DEL-CR10-0.90 PID# - 90243



Chris E. Bauserman, P.E., P.S.  
Delaware County Engineer

### STUDY'S PURPOSE

The purpose of this project is to improve safety along South Old State Road (CR10) by reducing the number of crashes resulting from roadway design, capacity, and geometric deficiencies, and to enhance transportation opportunities for pedestrian and bicycle traffic.

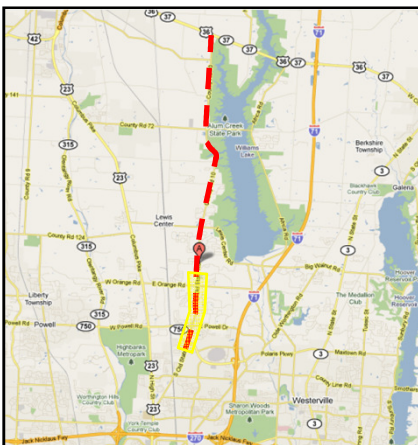
The segment from Wynstone Drive and Abbey Knoll Drive has a history of traffic accidents with more than 226 crashes occurring over the past three years and a crash rate of 5.16 crashes per million vehicle miles traveled, which is more than double the statewide average for similar roads.

The average daily traffic on this segment is 20,000 vehicles per day and is expected to grow to nearly 30,000 by the year 2035.

### GOALS AND OBJECTIVES

Considering the projected increase in traffic and the associated crashes along the corridor, the project goals will focus on improving the following criteria:

- Safety,
- Mobility, Enhancement of Pedestrian and Bicycle Transportation, and Community Connectivity;
- Accommodation of Transit,
- Quality of Life.



### TODAY'S MEETING

There will be no formal presentation at this meeting. The open house format will allow interested persons to review the study details at their own pace and to talk to representatives from the County Engineer's office and URS.

The County Engineer invites written comments at the meeting, through the project website at [www.southoldstateroad.org](http://www.southoldstateroad.org) and through the Delaware County Engineer's Office at:

Delaware County Engineer  
Attention: Ryan Mraz  
50 Channing Street  
Delaware, Ohio 43015  
[rmraz@co.delaware.oh.us](mailto:rmraz@co.delaware.oh.us)  
(740) 833-2400

### FREQUENTLY ASKED QUESTIONS

#### 1. How does the project affect me?

At present time it is unknown. Depending on where you live, work or shop in Delaware County your current trip routes to home, work or shopping may be altered in the future. As the project progresses more detailed information will become available.

#### 2. How can I learn more about the project?

The web site will be updated periodically to display project related information as it becomes available over time. In addition, you can become a subscriber to the project by logging onto the web site for regular project updates delivered either through this web site or via direct mailing.

#### 3. What is the project schedule?

The study of necessary improvements will take place through 2011. Development of preliminary engineering for required improvements will follow in 2012. Purchasing the necessary right of way will be done in 2013 and 2014. Construction is anticipated in 2016-2018.

#### 4. What are the project costs?

The total project cost is estimated at \$17.2 million. Construction is estimated at \$13.3 million; right of way acquisition is estimated at \$2.5 million, and engineering is estimated at \$1.4 million. MORPC has committed \$12.7 million in federal transportation funding for the project. Delaware County road and bridge funds will pay for the remaining project costs.

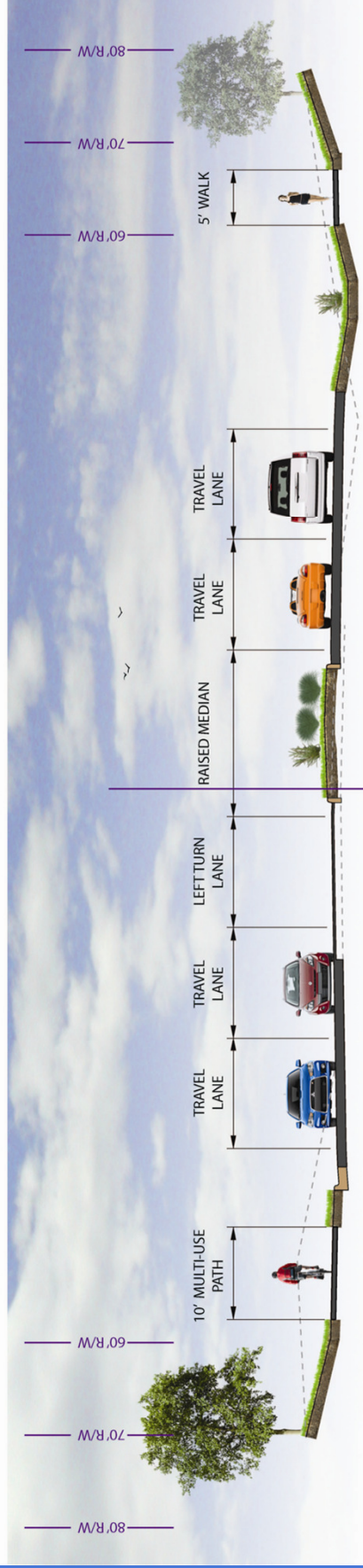
#### 5. How can I become involved?

You may become involved by registering through the web site by providing us with your name, email address, mailing address and telephone number. You may select the method of contact either through email (by providing your email address) or through US Postal Service (by providing your mailing address). Your personal information will be kept confidential throughout the project.

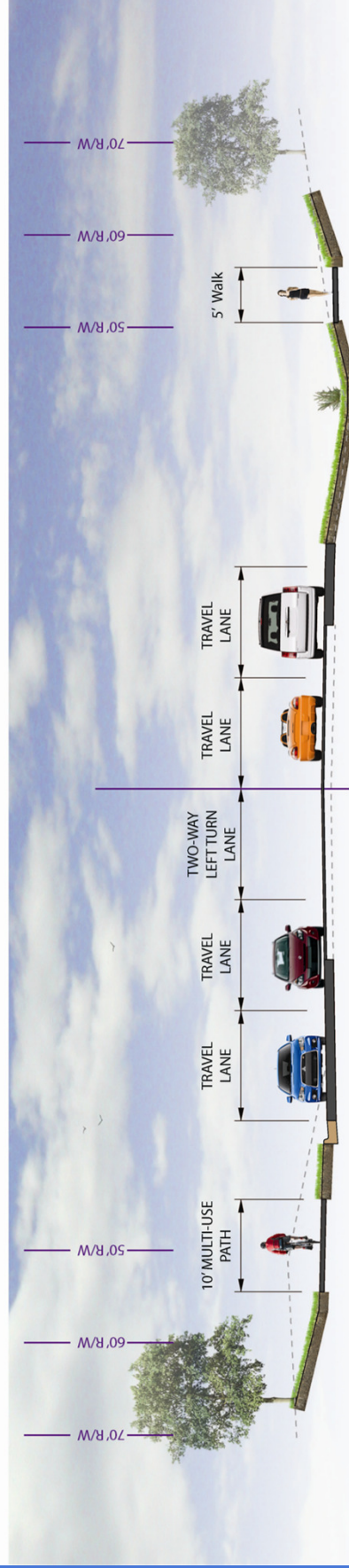
#### 6. Who can I talk to at the County to discuss the Study?

Please contact Ryan Mraz, Deputy Design Engineer at 740-833-2400 or send your questions or comments to [rmraz@co.delaware.oh.us](mailto:rmraz@co.delaware.oh.us).

# PROPOSED TYPICAL SECTIONS



**Raised Median Section**  
 South Old State Road - County Road 10  
 (Applies to Alternate 1 and part of Alternate 3)



**Center Turn Lane Section**  
 South Old State Road - County Road 10  
 (Applies to Alternate 2 and part of Alternate 3)